

Activating asanetwork on Hunter Engineering Alignment Consoles

1. Administrative rights

Log on as Administrator and close WinAlign.

HW1 – HW1B

Username: Administrator

Password: hecosvc

HW2

Username: Hunter

Password: hecosvc

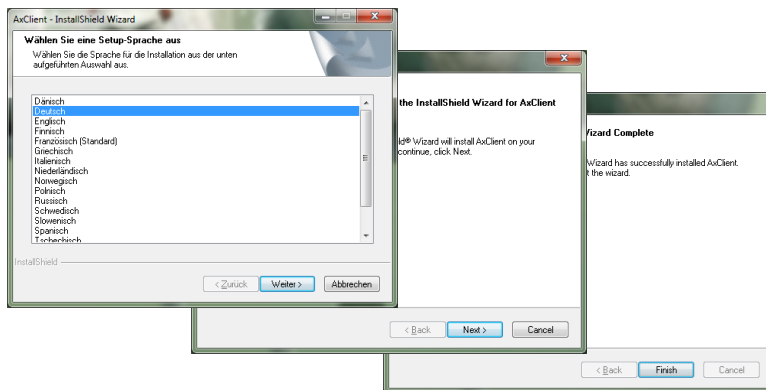
2. Install the AxClient3-3.0.1.163.exe ([Download here](#))

Hunter **HW1 PC** (Windows 7 Embedded 32bit):

The installation path is **C:\Windows\System32 **

Hunter **HW1B – HW2 PC** (Windows 7 Embedded 64bit / Windows 10 IoT):

The installation path is **C:\Windows\SysWOW64**



You may skip to step 4. If there are errors displayed, return to step 3.

3. Register the .dll files

Navigate to the following directory, dependant on OS version, and execute "reg_axc.cmd".

HW1 PC (Win 7 32bit):

"C:\Program Files\AxoNet Software GmbH\AxClient3\redistributable\reg_axc.cmd"

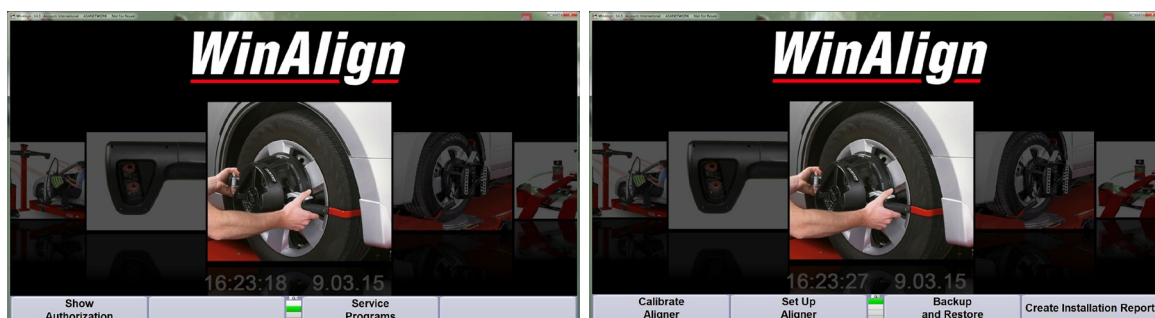
HW1B – HW2 PC (Win 7 64bit / Windows 10 IoT):

"C:\Program Files (x86)\AxoNet Software GmbH\AxClient3\redistributable\reg_axc.cmd"

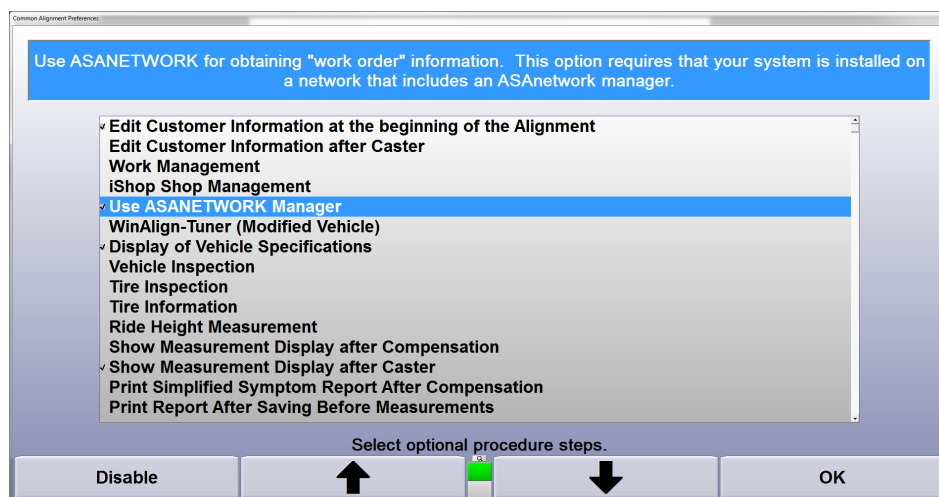
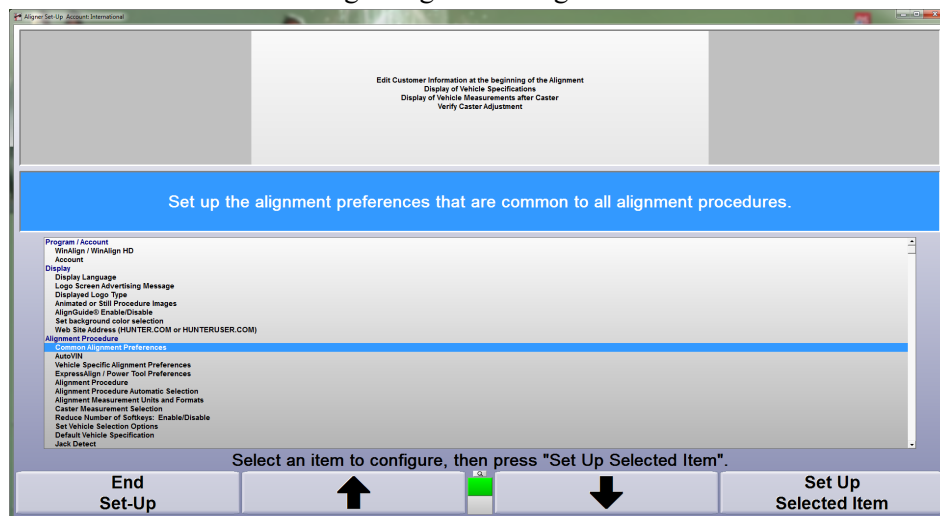
4. Set up WinAlign

Start WinAlign and enable „use asanetwork“ within the settings

- To access WinAlign setup, select Service Programs and WinAlign Setup.



- Select Common Alignment Preferences and enable “Use asanetwork Manager” and “Edit Customer Information at the Beginning of the Alignment”.



To test the functionality, start an alignment procedure. After selecting begin alignment, the first screen displayed should show the asanetwork screen without errors.

